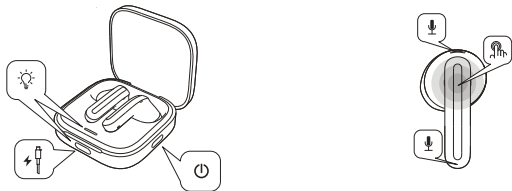




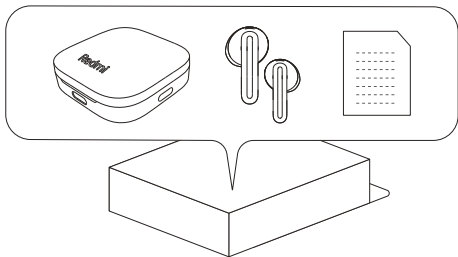
Redmi Buds 6 Active User Manual

Product Overview

Read this manual carefully before use, and retain it for future reference.

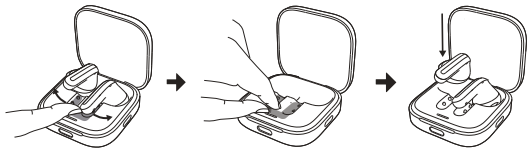


Package contents



First time using

Please peel off the protective film, place the earbuds back in the charging case, close and then reopen the lid; the earbuds will enter the automatic Bluetooth pairing mode.

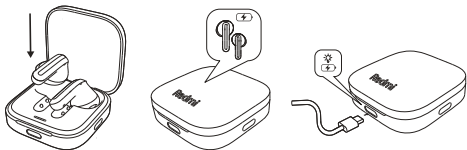


Wearing



Charging

This product's packaging does not include a charging cable.



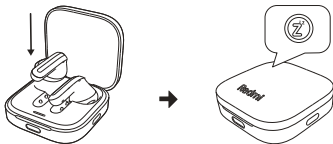
Turning on

When opening the charging case, the earbuds will automatically turn on.



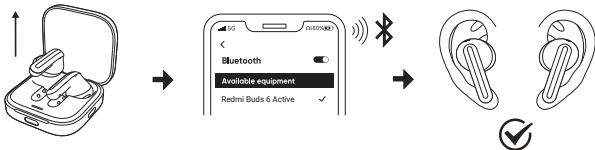
Sleep Mode

Place the earbuds back into the charging case and close the lid, the earbuds will disconnect and go into sleep mode automatically.



Connect & Pair

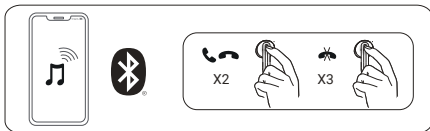
1. Open the case lid, hold the function key for 2 seconds until the light flashes, putting the earbuds in pairing mode.
2. Activate your device's Bluetooth, find and connect to the earbuds in the menu.



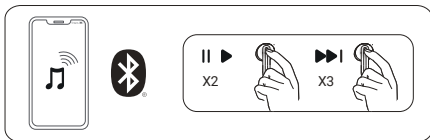
Note: Opening the case lid for the first time automatically activates pairing mode. In daily use, opening the charging case lid will automatically reconnect the earbuds to the last paired Bluetooth device. (Bluetooth device must be within earbuds' connection range.)

Function Overview

Double tap:
Call: Answer/End
Music: Play/Pause



Triple tap:
Call: Reject
Music: Next track



Note: Gesture operations can be customized via the Xiaomi Earbuds App.

Connecting with App

1. Scan the QR code to download and install **Xiaomi Earbuds** to enable more features.
2. Follow the instructions on the app to connect the earbuds.



Note: During the connection process, please make sure that the smartphone's Bluetooth is enabled. Put the earbuds into the charging box, open the lid, and ensure that your smartphone is near the box.

*Xiaomi Earbuds app supports mobile phones with Android 6.0 and above and iOS 14.0 and above.

*Please upgrade the app to the latest version.

Specifications

Name: Wireless Earphones
Model: M2344E1
Charging Port: Type-C
Earbuds Input: 5 V – 50mA
Charging Case Input: 5 V – 500mA

Charging Case Output: 5 V – 100mA
Wireless Connectivity: Bluetooth® 5.4
Operating Temperature: 0°C to 45°C
Wireless Range: 10 m (open space without obstacles)
Operation Frequency: 2402MHz to 2480MHz
Maximum Transmit Power: <13 dBm (for EU)

Compatible with: This product only supports certain Android or iOS systems. For detailed information, please check the product page on www.mi.com.

Note: Due to the connection characteristics of the Bluetooth signal, in dense environments with 2.4 GHz electromagnetic signal interferences, there may be occasional disconnects or no sound.

The power delivered by the charger shall be between min 1.75 Watts required by the radio equipment, and max 5 Watts in order to achieve the maximum charging speed.



WEEE Information

All products bearing this symbol are waste electrical and electronic equipment (WEEE as in directive 2012/19/EU) which should not be mixed with unsorted household waste. Instead, you should protect human health and the environment by handing over your waste equipment to a designated collection point for the recycling of waste electrical and electronic equipment, appointed by the government or local authorities. Correct disposal and recycling will help prevent potential negative consequences to the environment and human health. Please contact the installer or local authorities for more information about the location as well as terms and conditions of such collection points.



CE mark is applicable to product and built-in battery.

Hereby, Xiaomi Communications Co., Ltd. declares that the radio equipment type M2344E1 is in compliance with Directive 2014/53/EU and Regulation (EU) 2023/1542. The full text of the EU declaration of conformity is available at the following internet address:
<http://www.mi.com/global/service/support/declaration.html>



Hereby, Xiaomi Communications Co., Ltd. declares that the radio equipment type M2344E1 is in compliance with Radio Equipment Regulations 2017. The full text of the UKCA declaration of conformity is available at the following internet address: <https://www.mi.com/uk/service/support/declaration.html>

Important Safety Information

Before using and operating this device, read the following precautions to ensure an optimal device performance and avoid dangerous use or unauthorized operations.

· Product information and certification marks are located in the charging case.



To prevent possible hearing loss, do not use this product at high volume for long periods of time.

· Do not use the earbuds while driving, and comply with the relevant regulations in your region or country.

- Only use the power adapters that comply with the local safety standards or certified and supplied by qualified manufacturers.
- Do not disassemble, strike, crush or throw the product into fire, as it may cause an explosion.
- The product has a built-in battery that can not be removed or replaced. To avoid damage to the battery or the product, do not disassemble or modify the battery by yourself. The battery can only be replaced by the authorized service providers and must be replaced with the same type. Replacement of a battery with an incorrect type may defeat a safeguard (such as catching fire, explosion and leakage of corrosive electrolyte). Do not put the battery in trash that is disposed of in landfills. When disposing of the battery, comply with local laws or regulations.
- Disposal of a battery into fire or a hot oven, or mechanically crushing or cutting of a battery, that can result in an explosion.
- Do not use this product during thunderstorms. Thunderstorms may cause the product to malfunction and increase the risk of electric shocks.
- Leaving a battery in an extremely high temperature surrounding environment that can result in an explosion or the leakage of flammable liquid or gas.
- A battery subjected to extremely low air pressure that may result in an explosion or the leakage of flammable liquid or gas.
- These earbuds and their accessories may contain small parts. Please keep them out of the reach of children.
- Please stop using the product immediately and seek medical assistance if the contact area on your skin shows signs of redness or swelling.
- Enabling noise canceling may affect your awareness of surrounding sounds and alarms. Ensure that you are in a safe environment before using this function.
- – The symbol indicates DC voltage.

The Bluetooth® word mark and logos are registered trademarks owned by Bluetooth SIG, Inc. and any use of such marks by Xiaomi inc. is under license. Other trademarks and trade names are those of their respective owners.

Warranty Notice

As a Xiaomi consumer, you benefit under certain conditions from additional warranties. Xiaomi offers specific consumer warranty benefits which are in addition to, and not instead of, any legal warranties provided by your national consumer law. The duration and conditions related to the legal warranties are provided by respective local laws. For more information about the consumer warranty benefits, please refer to Xiaomi's official website <https://www.mi.com/global/support/warranty>. Except as prohibited by laws or otherwise promised by Xiaomi, the after-sales services shall be limited to the country or region of the original purchase. Under the consumer warranty, to the fullest extent permitted by law, Xiaomi will, at its discretion, repair, replace or refund your product. Normal wear and tear, force majeure, abuse or damage caused by the user's negligence or fault are not warranted. The contact person for the after-sale service may be any person in Xiaomi's authorized service network, Xiaomi's authorized distributors or the final vendor who sold the products to you. If in doubt please contact the relevant person as Xiaomi

may identify.

Products which were not duly imported and/or were not duly manufactured by Xiaomi and/or were not duly acquired from Xiaomi or a Xiaomi's official seller are not covered by the present warranties. As per applicable law you may benefit from warranties from the non-official retailer who sold the product. Therefore, Xiaomi invites you to contact the retailer from whom you purchased the product.

Disclaimer:

The illustrations of the product, accessories, user interfaces, and other elements in the user manual are schematic diagrams for reference only, and may differ slightly from the actual product. This manual is published by Xiaomi or an enterprise in Xiaomi's ecosystem. Typographical errors and inaccurate information in this manual or the related programs and/or equipment may change without prior notice. Such changes will be indicated in the latest version of the manual.

Manufacturer : Xiaomi Communications Co., Ltd.

Address: #019, 9th Floor, Building 6, 33 Xi'erqi Middle Road, Haidian District, Beijing, China, 100085

For further information, please go to www.mi.com

User Manual Version: V1.0

Manufacturer's Authorized UK Representative

Name: Xiaomi Technology UK Limited

Address: 100 Brook Drive Green Park, Unit Part Ground Floor, North Wing, Reading, England, RG2 6UJ

Manufacturer's Authorized EU Representative

Name: Xiaomi Technology Netherlands B.V

Address: Prinses Beatrixlaan 582, 2595BM, The Hague, The Netherlands

FCC Compliance Statements

This device complies with Part 15 of the FCC Rules. Operation is subject to the following two conditions:

(1) this device may not cause harmful interference, and (2) this device must accept any interference received, including interference that may cause undesired operation.

Caution: Changes or modifications not expressly approved by the party responsible for compliance could void the user's authority to operate the equipment.

Note: This equipment has been tested and found to comply with the limits for a Class B digital device, pursuant to Part 15 of the FCC Rules. These limits are designed to provide reasonable protection against harmful interference in a residential installation. This equipment generates, uses and can radiate radio frequency energy and, if not installed and used in accordance with the instructions, may cause harmful interference to radio communications. However, there is no guarantee that interference will not occur in a particular installation.

If this equipment does cause harmful interference to radio or television reception, which can be determined by turning the equipment off and on, the user is encouraged to try to correct the interference by one or more of the following measures:

- Reorient or relocate the receiving antenna.
- Increase the separation between the equipment and receiver.
- Connect the equipment into an outlet on a circuit different from that to which the receiver is connected.
- Consult the dealer or an experienced radio/TV technician for help.

ISED Compliance Statements

This device contains licence-exempt transmitter(s)/receiver(s) that comply with Innovation, Science and Economic Development Canada's licence-exempt RSS(s).

Operation is subject to the following two conditions:

- (1) This device may not cause interference.
- (2) This device must accept any interference, including interference that may cause undesired operation of the device. This equipment complies with IC RSS-102 radiation exposure limits set forth for an uncontrolled environment.

RF Exposure Compliance

This equipment complies with FCC/ISED radiation exposure limits set forth for an uncontrolled environment. This transmitter must not be co-located or operating in conjunction with any other antenna or transmitter.

This equipment should be installed and operated with minimum distance 0 mm between the radiator and your Head.

The portable device is designed to meet the requirements for exposure to radio waves established by the FCC/ISED. These requirements set a SAR limit of 1.6 W/kg averaged over one gram of tissue. The highest SAR value reported under this standard during product certification for use when properly worn on the Head, with 0mm separation.

Importer:

Beryko s.r.o.

Pod Vinicemi 931/2, 301 00 Plzeň

www.beryko.cz

